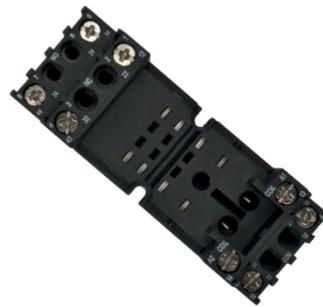


ELMARK[®]

The Brand of Electricity

INDUSTRIAL RELAYS AND BASES

NEW



DESCRIPTION »

Devices intended for construction of automation and signalling boards. They are mainly used for command transfer towards the executive mechanisms. Currents of comparatively heavy values enabling the direct control of industrial executive mechanisms are commuted in comparatively small sizes. The contact surfaces are made from silver-coated electrolytic copper. The entire contact system is closed within a lid of colourless fire-proof plastic with a test-button installed to it. The base provides a safe electric connection of the conductors of the electric installation and the relays and is used to install the relay to the DIN busbar.

TECHNICAL DATA »

- Supply voltage: from 12 to 230V AC, 50 Hz and from 12 to 110V DC
- Acceptable deviation of the supply voltage: 85 -110% Un
- Rated current of the sockets: 10A AC
- Electrical endurance: 1 000 000 cycles
- Isolation resistance: 500 mΩ /min (500V)
- Impulse tension resistance: 2000V, 50Hz
- Dielectric strength: 1000V AC/1 min
- Turn-out time: 25ms
- Working temperature: -5 ÷ + 65°C
- Humidity: 35 - 85% RH indicator
- possibility for mounting of additional contacts (for the open type)
- remarkable with high reliability of current characteristics

MOUNTING »

- on a DIN rail by means of a socket

[PRODUCT DETAILS »](#)

Type - ELM - 14FC



Catalogue number	Relay type	Voltage of the coil (V)	Socket type	Resistance of the coil (Ω)	Number of contacts	Packing/Box (pcs)
57141	ELM - 14FC	12 VDC	ELM-RT624-B	260	NO+NC	100/1000
57142	ELM - 14FC	24 VDC	ELM-RT624-B	1080	NO+NC	100/1000
57143	ELM - 14FC	48 VDC	ELM-RT624-B	4260	NO+NC	100/1000

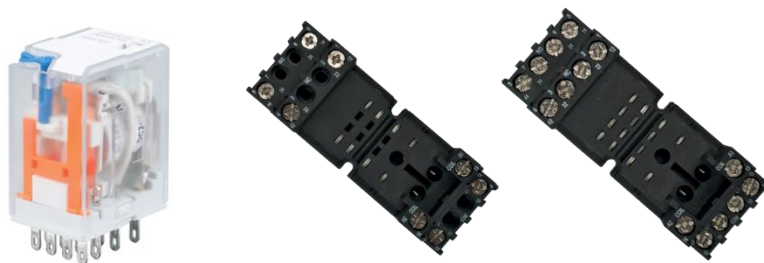
Type - ELM-90.2/ELM-90.3



Catalogue number	Relay type	Voltage of the coil (V)	Socket type	Resistance of the coil (Ω)	Number of contacts	Packing/Box (pcs)
57601N	ELM-90.2	12VDC	ELM-90.22	90	2NO+2NC	10/200
57602N	ELM - 90.2	24 VDC	ELM - 90.22	360	2NO+2NC	10/200
57603N	ELM - 90.2	48 VDC	ELM - 90.22	1440	2NO+2NC	10/200
57605N	ELM - 90.2	230 VAC	ELM - 90.22	6800	2NO+2NC	10/200
57606N	ELM-90.2	24VAC	ELM-90.22	72	2NO+2NC	10/200
57611N	ELM-90.3	12VDC	ELM-90.23	90	3NO+3NC	10/200
57612N	ELM - 90.03	24 VDC	ELM - 90.23	360	3NO+3NC	10/200
57613N	ELM - 90.03	48 VDC	ELM - 90.23	1440	3NO+3NC	10/200
57614N	ELM - 90.03	110 VAC	ELM - 90.23	1650	3NO+3NC	10/200
57615N	ELM-90.3	230 VAC	ELM-90.23	6800	3NO+3NC	10/200
57616N	ELM-90.3	24VAC	ELM-90.23	72	3NO+3NC	10/200

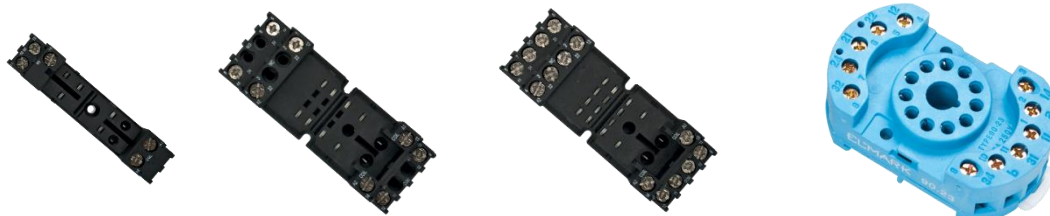
TECHNICAL SPECIFICATION SHEET

Type - ELM-36.02/ELM-36.04



Catalogue number	Relay type	Voltage of the coil (V)	Socket type	Resistance of the coil (Ω)	Number of contacts	Packing/Box (pcs)
57521N	ELM-36.02	12VDC	ELM-RT702-B	60	2NO+2NC	20/500
57522N	ELM-36.02	24VDC	ELM-RT702-B	640	2NO+2NC	20/500
57523N	ELM-36.02	48 VDC	ELM-RT702-B	2560	2NO+2NC	20/500
57525N	ELM-36.02	230VAC	ELM-RT702-B	15000	2NO+2NC	20/500
57526N	ELM-36.02	24VAC	ELM-RT702-B	168	2NO+2NC	20/500
57541N	ELM-36.04	12VDC	ELM-RT704-B	160	4NO+4NC	20/500
57542N	ELM-36.04	24VDC	ELM-RT704-B	640	4NO+4NC	20/500
57543N	ELM-36.04	48 VDC	ELM-RT704-B	2560	4NO+4NC	20/500
57544N	ELM-36.04	110 VAC	ELM-RT704-B	4000	4NO+4NC	20/500
57545N	ELM-36.04	230 VAC	ELM-RT704-B	15000	4NO+4NC	20/500
57546N	ELM-36.04	24VAC	ELM-RT704-B	192	4NO+4NC	20/500

Socket types



Catalogue number	Socket type	Dimensions (mm)	Number of terminals (pcs.)	Packing/Box (pcs)
57901	ELM - RT624-B	76 x 15	5	20 / 600
57902	ELM - RT702-B	76 x 27	11	10 / 240
57912	ELM - RT704-B	76 x 27	14	10 / 240
57904	ELM - 90.22	68 x 38	8	10 / 400
57905	ELM - 90.23	68 x 38	11	10 / 400